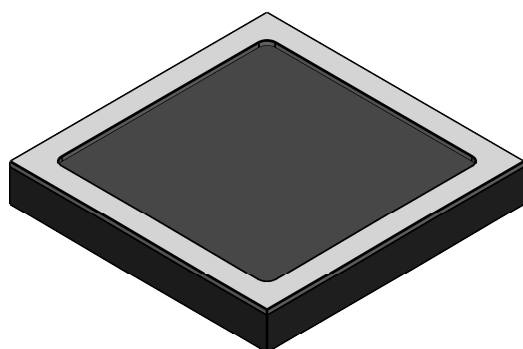
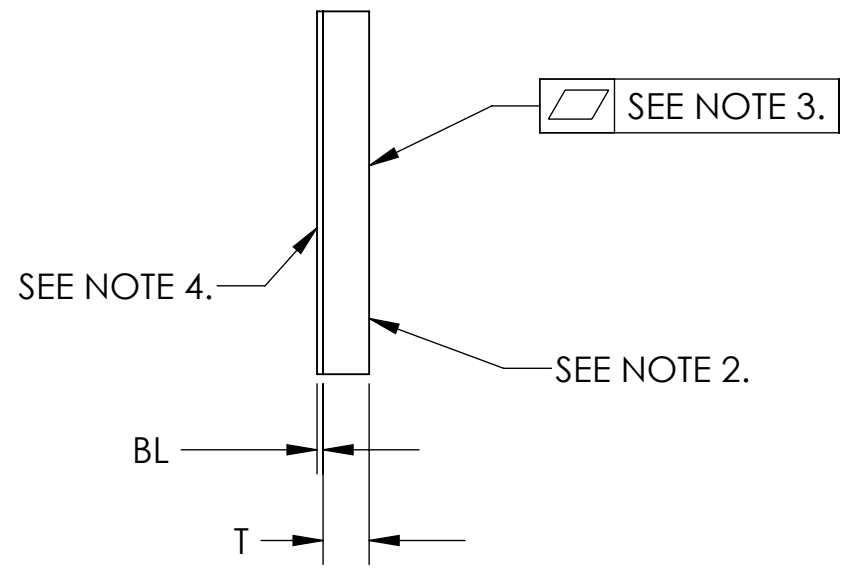
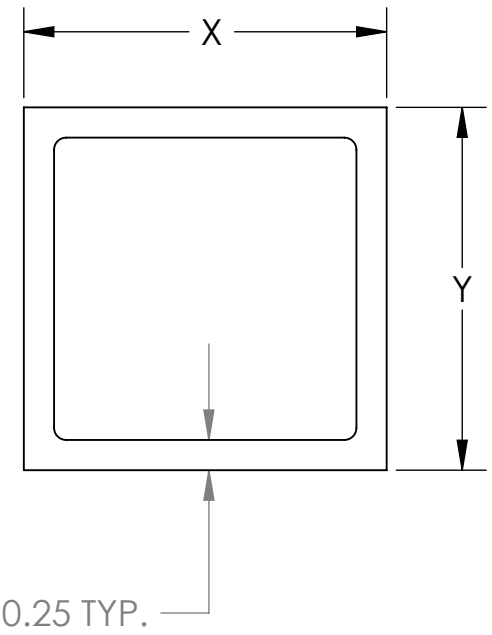


REVISIONS				
ZONE	REV.	DESCRIPTION	DATE	APPROVED
	A	ORIGINAL RELEASE	5/25/12	SS
B3	B	MODIFIED BASE DIMENSION OF CERTAIN LID SIZES.	12/19/14	SS
	C	REDUCED LID SIZES FOR BOTH 3X3 AND 4X4 LIDS	9/16/2015	SS
A8	D	ADJUSTED STORAGE LIFE TO EPOXY MFGR'S RECOMMENDATIONS.	7/22/2019	MV




Quik-Pak Part Number	X	Y	T	BL
QP-3X3-ES-CLID	2.95	2.95	0.38	0.05
QP-4X4-ES-CLID	3.95	3.95	0.38	0.05
QP-5X5-ES-CLID	4.90	4.90	0.38	0.05
QP-6X6-ES-CLID	5.90	5.90	0.38	0.05
QP-7X7-ES-CLID	6.90	6.90	0.38	0.05
QP-8X8-ES-CLID	7.90	7.90	0.38	0.05
QP-9X9-ES-CLID	8.90	8.90	0.38	0.05
QP-10X10-ES-CLID	9.90	9.90	0.38	0.05
QP-12X12-ES-CLID	11.85	11.85	0.38	0.05

- 5. - STORAGE LIFE: 1-MONTH @ 20° C., 3-MONTHS @ 10° C., 6-MONTHS @ -20° C., 1-YEAR @ -40° C.
- 4. - RECOMMENDED EPOXY CURE: 150° C FOR 60 MINUTES. CLAMP PRESSURE: 0.035 KG/CM SQ. (0.5 PSI).
- 3. - 3X3MM TO 5X5MM (X-Y) = 0.02
6X6MM TO 12X12MM (X-Y)= 0.05
- 2. - FINISH: <45 MICRO-INCHES ON TOP & BOTTOM SURFACES. DIAMOND SAW CUT ON EDGES.
- 1. - MATERIAL: 91% ALUMINA OPAQUE COLOR (DARK-BROWN)

GENERAL NOTES: (UNLESS OTHERWISE SPECIFIED)

PROPRIETARY AND CONFIDENTIAL
 THE INFORMATION CONTAINED IN THIS DRAWING IS THE SOLE PROPERTY OF QPTECHNOLOGIES. ANY REPRODUCTION, IN PART, OR AS A WHOLE WITHOUT THE WRITTEN PERMISSION OF QPTECHNOLOGIES IS PROHIBITED.

UNLESS OTHERWISE SPECIFIED: DIMENSIONS ARE IN MILLIMETERS		DRAWN	S. Swen	5/25/12	 <p>QPTECHNOLOGIES A DIVISION OF PRIMOEX INDUSTRIES QPTECHNOLOGIES.COM</p>
TOLERANCE: .XX: +0.00, -0.15 EXCEPT "BL" DIMENSION WHICH IS +0.05 -0.00.		CHECKED	S. Swen	5/25/12	
		ENG APPR.	S. Swen	5/25/12	
		COMMENTS:			<p>TITLE:</p> <p>CERAMIC LID W/ B-STAGED SEAL</p>
MATERIAL SEE NOTE 1.					
FINISH SEE NOTE 2.					<p>SIZE B DWG. NO. 500513 REV D</p>
NEXT ASSY	USED ON	DO NOT SCALE DRAWING			SCALE: 16:1 WEIGHT: SHEET 1 OF 1

